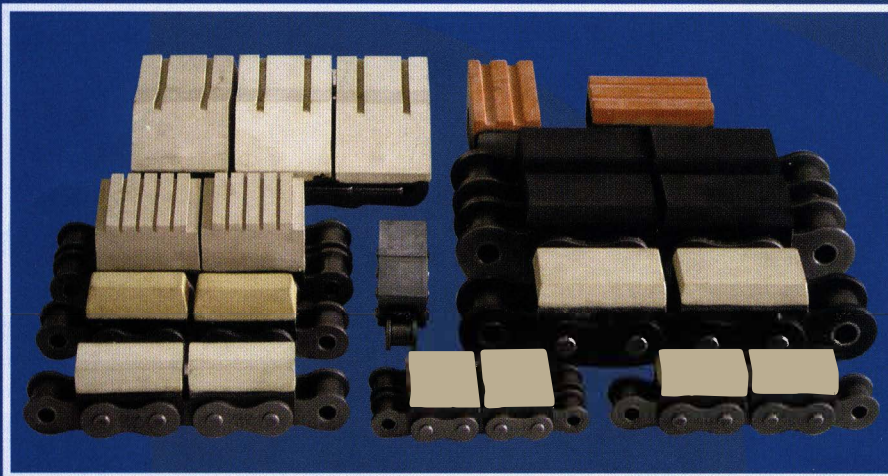
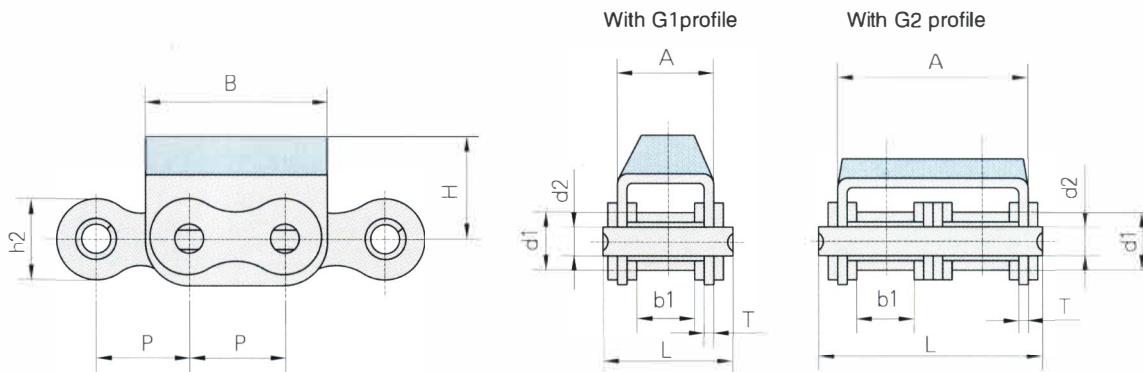
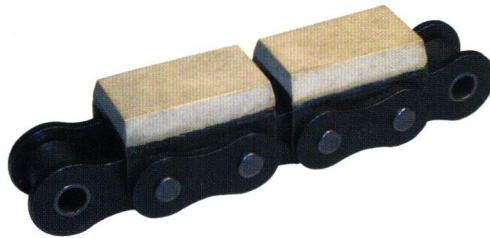


ROLLER CHAIN WITH VULCANISED ELASTOMER PROFILES

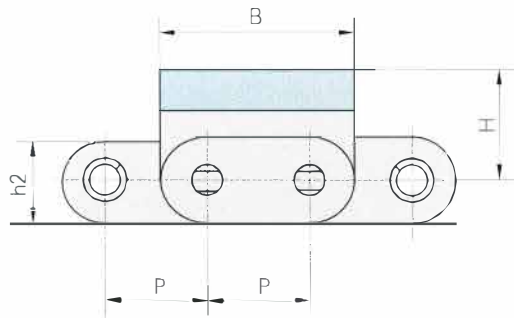


Roller chain with vulcanised elastomer profiles



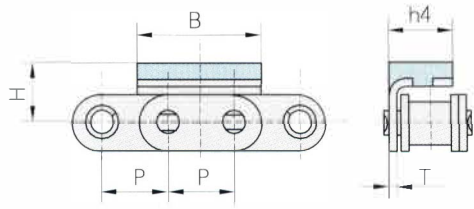
Chain No.	Pitch	Roller diameter	Width between inner plates	Pin diameter	Pin length	Plate and attachment dimension				Ultimate tensile strength	Weight per meter	
	P	d1 max	b1 min	d2 max	L max	h2 max	A	B	H	T	Q min	q
	mm	mm	mm	mm	mm	mm	mm	mm	mm	mm	kN/LB	kg/m
08B-G1	12.70	8.51	7.75	4.45	20.0	11.8	14.6	24.2	12.3	1.60	18.0/4091	1.19
08B-G2	12.70	8.51	7.75	4.45	34.3	11.8	28.4	24.2	12.3	1.50	32.0/7273	2.07
10B-G1	15.875	10.16	9.65	5.08	23.2	14.7	16.8	30.0	17.0	1.6	19.0/4318	1.62
10B-G2	15.875	10.16	9.65	5.08	39.7	14.7	33.3	30.0	17.0	1.5	44.5/10114	2.56
12B-G1	19.05	12.07	11.68	5.72	25.7	16.0	19.6	36.0	21.0	1.85	29.0/6591	2.01
12B-G2	19.05	12.07	11.68	5.72	45.3	16.0	39.1	36.0	16.0	1.85	57.8/13136	3.21
16A-G1	25.40	15.88	15.75	7.92	37.2	24.0	27.5	46.0	20.0	2.42	42.0/9545	3.97
16B-G1	25.40	15.88	17.02	8.28	39.7	21.0	29.05	49.0	21.4	1.60	58.0/13047	3.83
20B-G1	31.75	19.05	19.56	10.19	48.0	26.4	36.0	57.0	27.0	3.50	85.0/19318	6.19
24B-G1	38.10	25.40	25.40	14.63	61.6	33.2	47.0	72.6	34.0	4.50	160.0/36363	11.25

Roller chain with vulcanised elastomer profiles



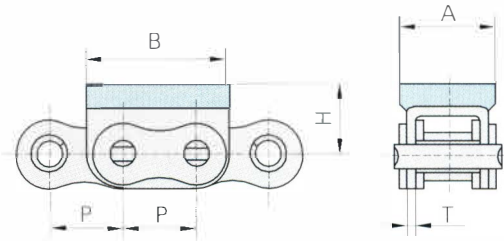
Chain No.	Pitch	Roller diameter	Width between inner plates	Pin diameter	Pin length	h2 max	Plate and attachment dimension				Ultimate tensile strength	Weight per meter
	P	d1 max	b1 min	d2 max	L max		A	B	H	T	Q min	q
	mm	mm	mm	mm	mm	mm	mm	mm	mm	mm	kN/LB	kg/m
C08B-G1	12.70	8.51	7.75	4.45	20.0	11.8	14.6	24.2	12.3	1.60	18.0/4091	1.30
C08B-G2	12.70	8.51	7.75	4.45	34.3	11.8	28.4	24.2	12.3	1.50	32.0/7273	2.29
C10B-G1	15.875	10.16	9.65	5.08	23.2	14.7	16.8	30.0	17.0	1.60	19.0/4318	1.75
C10B-G2	15.875	10.16	9.65	5.08	39.7	14.7	33.3	30.0	17.0	1.50	44.5/10114	2.95
C12B-G1	19.05	12.07	11.68	5.72	25.7	16.0	19.6	36.0	21.0	1.85	29.0/6591	2.15
C12B-G2	19.05	12.07	11.68	5.72	45.3	16.0	39.1	36.0	16.0	1.85	57.8/13136	3.48
C16A-G1	25.40	15.88	15.75	7.92	37.2	24.0	27.5	46.0	20.0	2.42	42.0/9545	4.34
C16B-G1	25.40	15.88	17.02	8.28	39.7	21.0	29.05	49.0	21.4	1.60	58.0/13047	4.11
C20B-G1	31.75	19.05	19.56	10.19	48.0	26.4	36.0	57.0	27.0	3.50	85.0/19318	6.65
C24B-G1	38.10	25.40	25.40	14.63	61.6	33.2	47.0	72.6	34.0	4.50	160.0/36363	11.63

Roller chain with vulcanised elastomer profiles

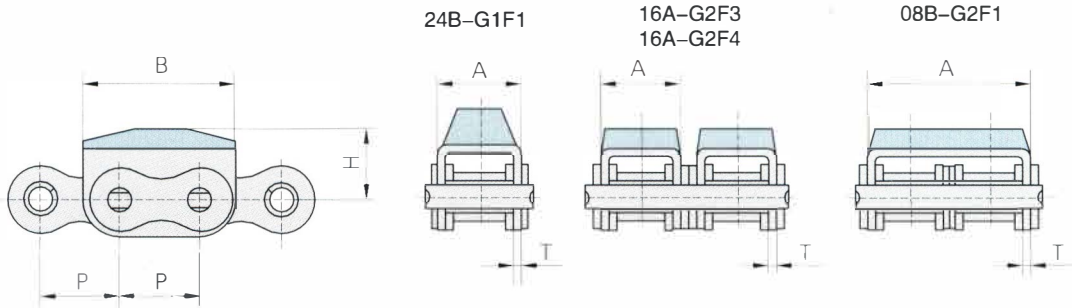
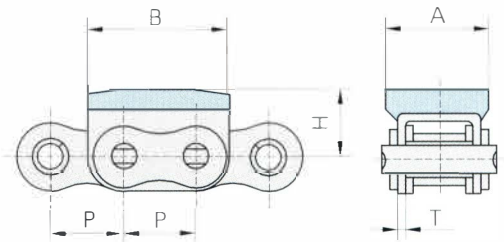


Donghua Chain No.	P	B	H	h4	T
	mm	mm	mm	mm	mm
06BF9	9.525	17.73	9.0	9.05	1.3

Chain No.	P	A	B	H	T
	mm	mm	mm	mm	mm
08B-G1F1	12.7	18.0	24.2	12.3	1.6



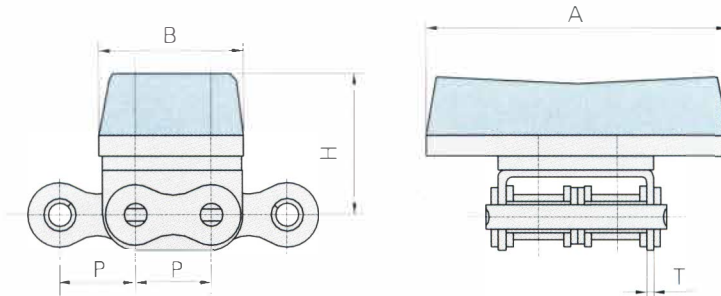
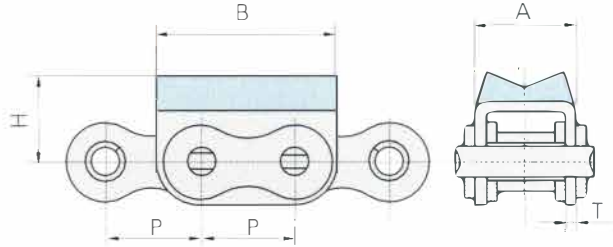
Chain No.	P	A	B	H	T
	mm	mm	mm	mm	mm
08B-G1F4	12.7	18.0	24.2	12.3	1.6



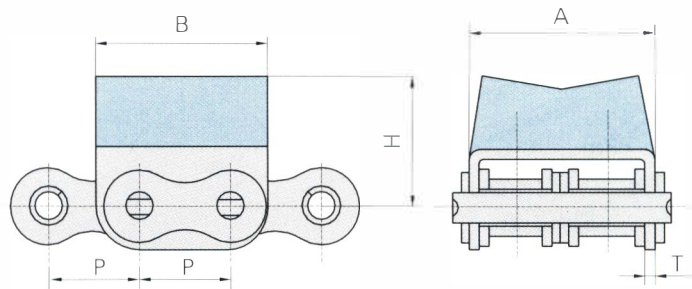
Chain No.	P	A	B	H	T
	mm	mm	mm	mm	mm
08B-G2F1	12.7	28.4	24.2	12.0	1.5
16A-G2F3	25.4	27.5	49.0	21.4	2.42
16A-G2F4	25.4	27.0	49.2	20.0	2.03
24B-G1F1	38.1	47.0	72.6	34.0	4.5

Roller chain with vulcanised elastomer profiles

Chain No.	P	A	B	H	T
	mm	mm	mm	mm	mm
12B-G1F1	19.05	19.6	36.0	18.0	1.85

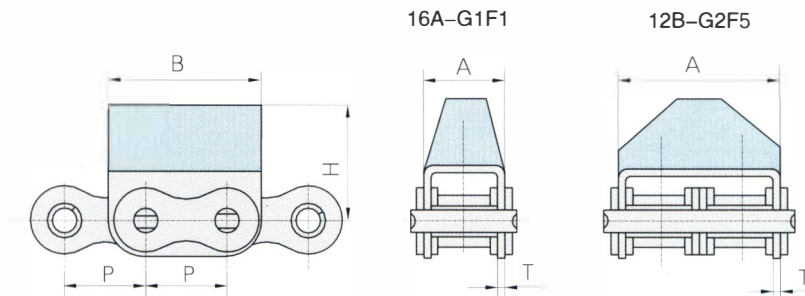


Chain No.	P	A	B	H	T
	mm	mm	mm	mm	mm
12B-G2F3	19.05	77.0	37.0	36.0	1.85

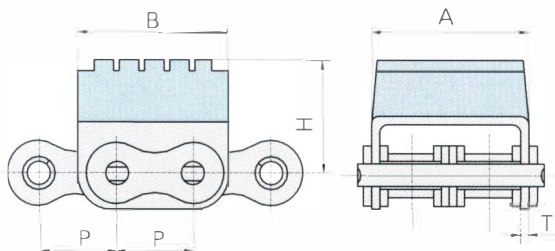


Chain No.	P	A	B	H	T
	mm	mm	mm	mm	mm
12B-G2F4	19.05	39.1	36.0	27.5	1.85

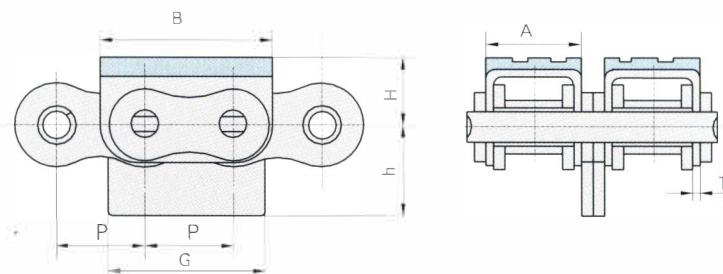
Roller chain with vulcanised elastomer profiles



Chain No.	P	A	B	H	T
	mm	mm	mm	mm	mm
12B-G2F5	19.05	39.1	36.0	28.0	1.85
16A-G1F1	25.40	27.5	46.0	21.4	2.42

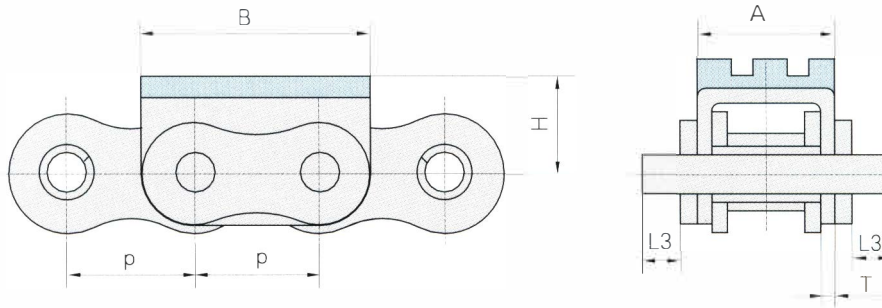


Chain No.	P	A	B	H	T
	mm	mm	mm	mm	mm
12B-G2F6	19.05	39.1	37.3	28.2	1.85



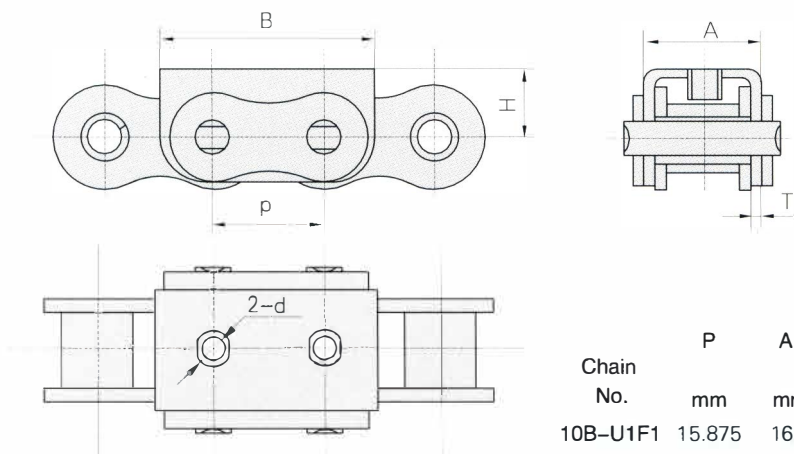
Chain No.	P	A	B	G	h	H	T
	mm	mm	mm	mm	mm	mm	mm
16A-G2F1	25.4	27.0	49.2	45.4	25.0	20.0	2.03

Roller chain with vulcanised elastomer profiles



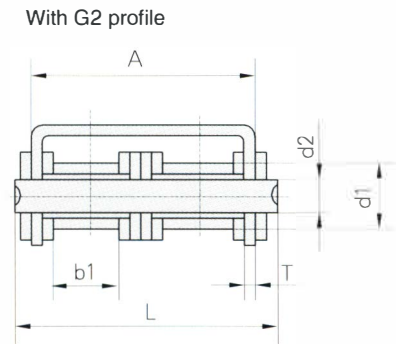
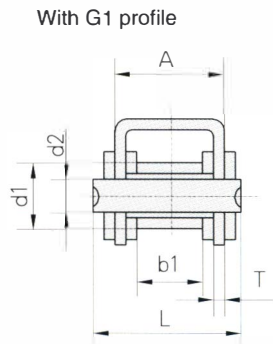
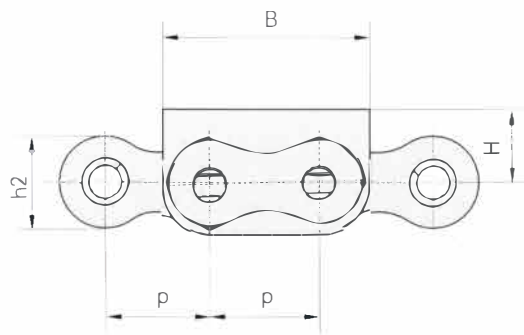
Chain No.	P mm	A mm	B mm	L ₃ mm	H mm	T mm
16A-G1F3	25.4	27.5	49.0	8.25	21.4	2.42

Roller chain with U type attachments



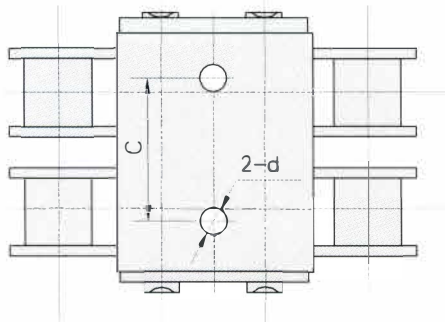
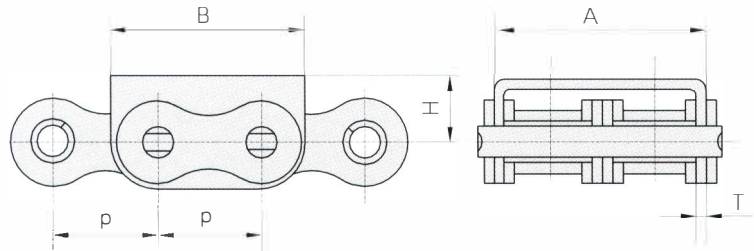
Chain No.	P mm	A mm	B mm	d mm	H mm	T mm
10B-U1F1	15.875	16.8	30.0	M5	11.3	1.6
16A-U1F2	25.4	27.3	49.5	M6	16.45	2.3

Roller chain with U type attachments

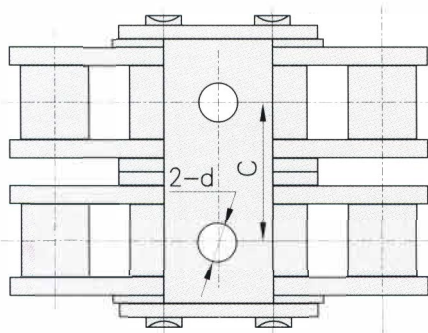
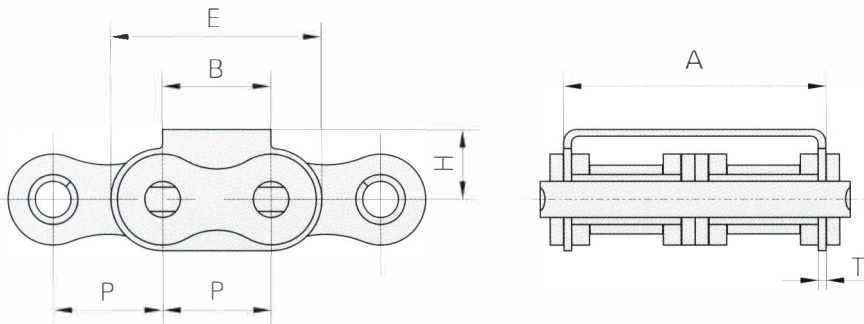


Chain No.	Pitch	Roller diameter	Width between inner plates	Pin diameter	Pin length	Plate and attachment dimension					Ultimate tensile strength	Weight per meter
	P	d ₁ max	b ₁ min	d ₂ max	L max	h ₂ max	A	B	H	T	Q min	q
	mm	mm	mm	mm	mm	mm	mm	mm	mm	mm	kN/LB	kg/m
08B-U1	12.70	8.51	7.75	4.45	20.0	11.8	14.6	24.2	8.3	1.60	18.0/4091	1.13
08B-U2	12.70	8.51	7.75	4.45	34.3	11.8	28.4	24.2	8.3	1.50	32.0/7273	1.96
10B-U1	15.875	10.16	9.65	5.08	23.2	14.7	16.8	30.0	11.3	1.60	19.0/4318	1.53
10B-U2	15.875	10.16	9.65	5.08	39.7	14.7	33.3	30.0	11.3	1.50	44.5/10114	2.47
12B-U1	19.05	12.07	11.68	5.72	25.7	16.0	19.6	36.0	13.0	1.85	29.0/6591	1.90
12B-U2	19.05	12.07	11.68	5.72	45.3	16.0	39.1	36.0	12.0	1.85	57.8/13136	3.03
16A-U1	25.40	15.88	15.75	7.92	37.2	24.0	27.5	46.0	16.0	2.42	42.0/9545	3.87
16B-U1	25.40	15.88	17.02	8.28	39.7	21.0	29.05	49.0	15.4	1.60	58.0/13407	3.73
20BF2	31.75	19.05	19.56	10.19	48.0	26.4	36.0	57.0	21.0	3.50	85.0/19318	6.01
24B-U1	38.10	25.40	25.40	14.63	61.6	33.2	47.0	72.6	28.0	4.50	160.0/36363	10.88

Roller chain with U type attachments

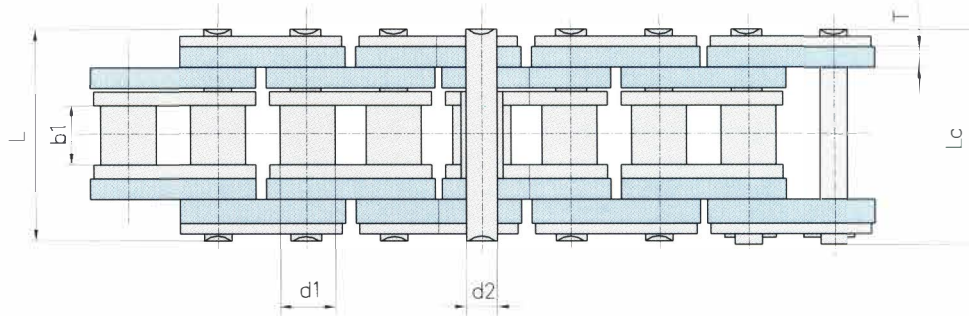
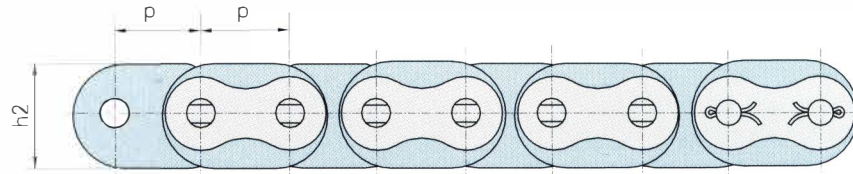


Chain No.	P	A	B	C	d	H	T
	mm	mm	mm	mm	mm	mm	mm
08B-U2F2	12.7	28.4	24.2	17.5	3.3	8.3	1.5



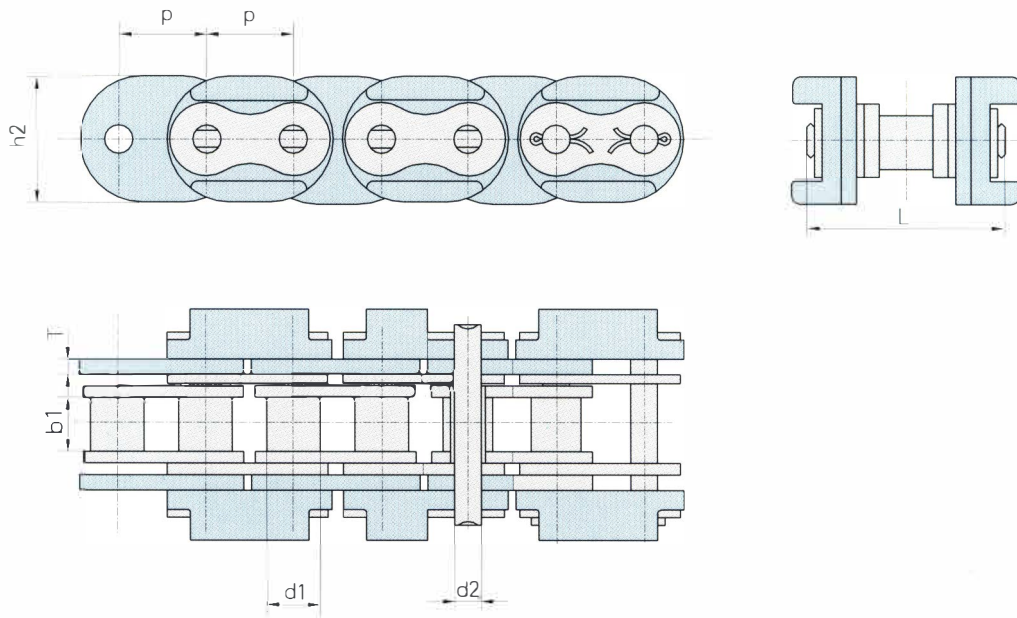
Chain No.	P	A	B	C	d	E	H	T
	mm	mm	mm	mm	mm	mm	mm	mm
16B-U2F1	25.4	60.93	25.0	33.5	9.0	49.0	16.2	1.6

Roller chain with plastic attachments



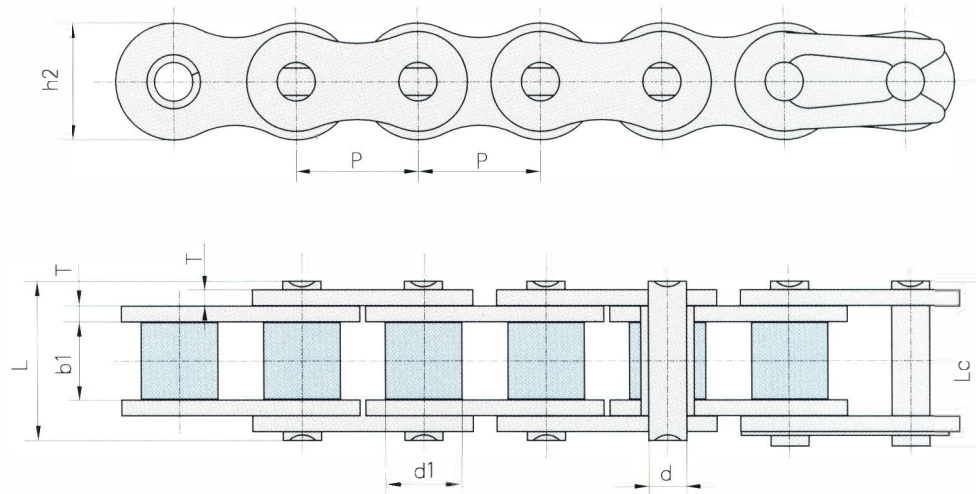
Chain No.	Pitch	Roller diameter	Width between inner plates	Pin diameter	Pin length		Plate and attachment dimension		Ultimate tensile strength	Weight per meter
	P	d ₁ max	b ₁ min	d ₂ max	L max	L _c max	h ₂	T	Q min	q
	mm	mm	mm	mm	mm	mm	mm	mm	kN/LB	kg/m
16BF9	25.4	15.88	17.02	8.28	61.0	64.2	30.0	6.0	22.0/4949	3.7

Roller chain with plastic attachment



Chain No.	Pitch	Roller diameter	Width between inner plates	Pin diameter	Pin length	Plate and attachment dimension		Ultimate tensile strength	Weight per meter
	P	d1 max	b1 min	d2 max	L max	h2 max	T	Q min	q
	mm	mm	mm	mm	mm	mm	mm	kN/LB	kg/m
20BF6	31.75	19.05	19.56	10.19	73.7	45.0	6.0	95.0/21591	6.35

Roller chain with plastic rollers



Chain No.	Pitch	Roller diameter	Width between inner plates	Pin diameter	Pin length		Inner plate depth	Plate thickness	Ultimate tensile strength	Average tensile strength	Weight per meter
	P	d1 max	b1 min	d2 max	L max	Lc max	h2 max	T	Q min	Q	q
	mm	mm	mm	mm	mm	mm	mm	mm	kN/LB	kN	kg/m
40-P	12.700	7.95	7.85	3.96	16.60	17.80	12.00	1.50	14.10/3205	17.5	0.56
50-P	15.875	10.16	9.40	5.08	20.70	22.20	15.09	2.03	22.20/5045	29.4	0.96
60-P	19.050	11.91	12.57	5.94	25.90	27.70	18.00	2.42	31.80/7227	41.5	1.35
80-P	25.400	15.88	15.75	7.92	32.70	35.00	24.00	3.25	56.70/12886	69.4	2.26
A2050-P	31.750	10.16	9.40	5.08	20.70	22.20	15.00	2.03	22.2/5045	28.1	0.61